

Parents set for language battle

from Michael Binyon North America correspondent

A widespread campaign of defiance has begun in Quebec by English-speaking parents opposed to the recent and controversial Bill restricting their right to send their children to English-speaking schools.

The parents' action follows the English-speaking community's dismay with the new separatist government's decision to change Quebec into a unilingual province.

According to the Bill, it will be impossible in future for newcomers to Quebec—other immigrants or Canadians from other provinces—to send their children to English-speaking schools.

The Bill classifies English-speakers into five different groups and gives only some of them the right to continue sending children to English schools.

The first category is a man or his wife who went to an English-speaking elementary school in Quebec. They can send their children, including any still to be born, to an English school.

On the other hand, a couple who did not go to an English elementary school in Quebec and whose children are not yet born will not be allowed to send them to an English school.

The effect of these rules will be to sharply reduce the number of children eligible for English schools.

Some boards have objected to this, and one in the Montreal area has indicated that it would continue to refuse to comply after the law is promulgated and parents have launched a campaign for contributions that would help pay teachers in districts deprived of public money.

Sri Lanka's new government faces many problems amid growing discontent. D. B. Udalagama reports. Rural schools head queue for change

COLOMBO

The United National Party, which was returned to power in a landslide last month revealed no detailed education plans in its election campaign.

The new government's most urgent task is to ally the discontent of the university community, both teachers and students. It will also have to face the possibility that a large number of teachers and students will be expelled from the country.

Almost the first announcement made by the new Minister of Education, Mr. Nissenk Wijeyaratne, was that he would make a study of the system of higher education and make any adjustments that may be necessary to ensure that the country derives the highest possible benefit from the system.

By its University of Ceylon Act, the Government has made the University of Ceylon an autonomous body, free to manage its affairs and to control its own budget.

Italy Report predicts 25pc annual spending growth

by Dalbert Hallensteln

State spending on education could get out of control in the next few years, according to a report just released by the Social Investment Study Centre (Sensis).

Green Paper: platitudes and pious hopes

LETTERS

This is a very pleasant state of affairs for the mediocre and the inept, but it does not lead to achievement and progress, only to decline and collapse.

Accepting that the TES extract from the Green Paper represents in essence its proposals and recommendations, there is an anomalous lack of reference to the needs of exceptionally able children and their contributions to our technological society.

Tailor-made for governors

One of the most important recommendations of the Taylor report has attracted surprisingly little attention. Initial and in-service training of school governors could be a most valuable advance.

The suggestion in the Green Paper that "where possible preferment to applicants who have had some employment experience in the world of education" is admirable.

White Lion's misdirected roar Literacy campaign: role of the BBC...

Peter Newell (Ston Playing Golf) writes a long and interesting article for the London Education Authority.

One paragraph makes a brief point about the financial arguments and whether part of the ILEA's story is dismissed as "Oppositionists who are not doing similar work. Not true."

Mr. Newell's unsupported assertion "it is itself false (his own show who)" is an insult to the ILEA's readers and ILEA members who are working in a variety of voluntary and other alternative education units.

The ILEA is spending about £11,000 this year to aid voluntary organisations running 20 centres in inner London for truant and other children with difficulties.

The article "Unreasonable Demands" by June Mace and Kate Harding (July 15) raises many important points. We are well aware of the difficulties experienced by workers in adult education but feel that a positive collaborative approach through all the existing agencies is the best way forward.

More consultation was carried out by us on the literacy scheme than any other we have mounted. There was a quite extraordinary consensus of opinion and we have no reason to regret any of our major decisions.

As a number of agencies from national to local level have responsibilities in this field we had to find out how to work together.

Malta Parents force climbdown

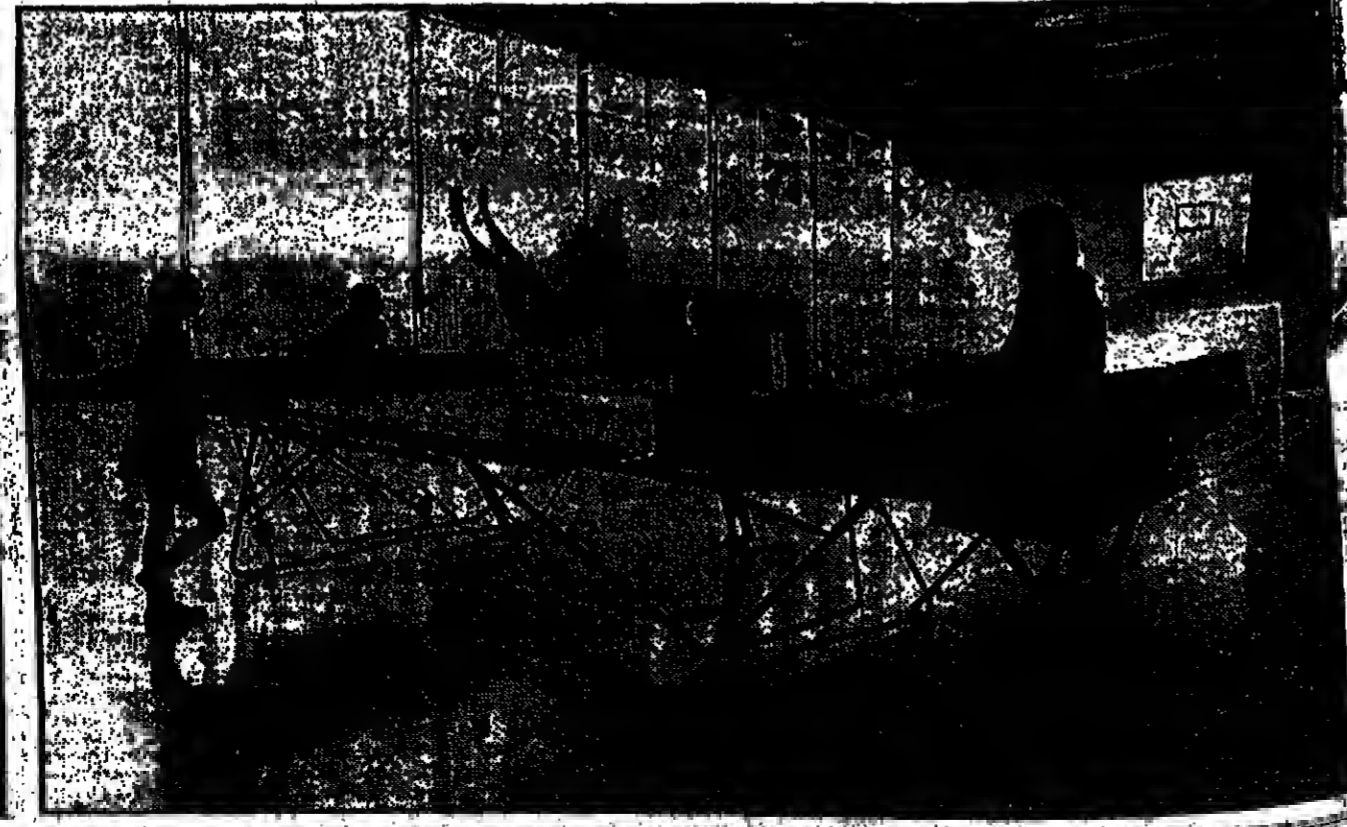
by Carl Stevin

Parental concern with the disorderly condition of the state education system has led to a considerable increase in the private sector and forced the government to abandon plans to phase out private tuition by teachers in state schools.

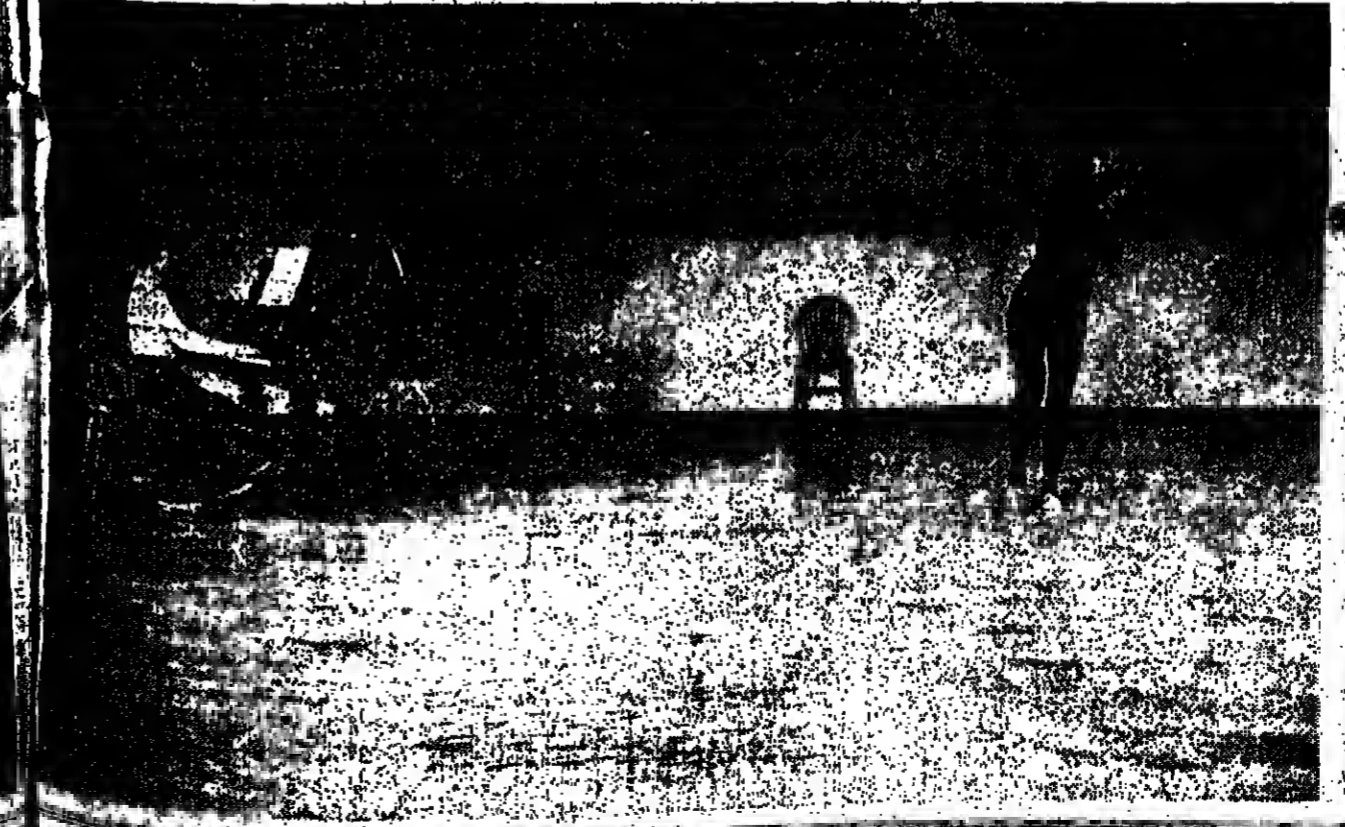
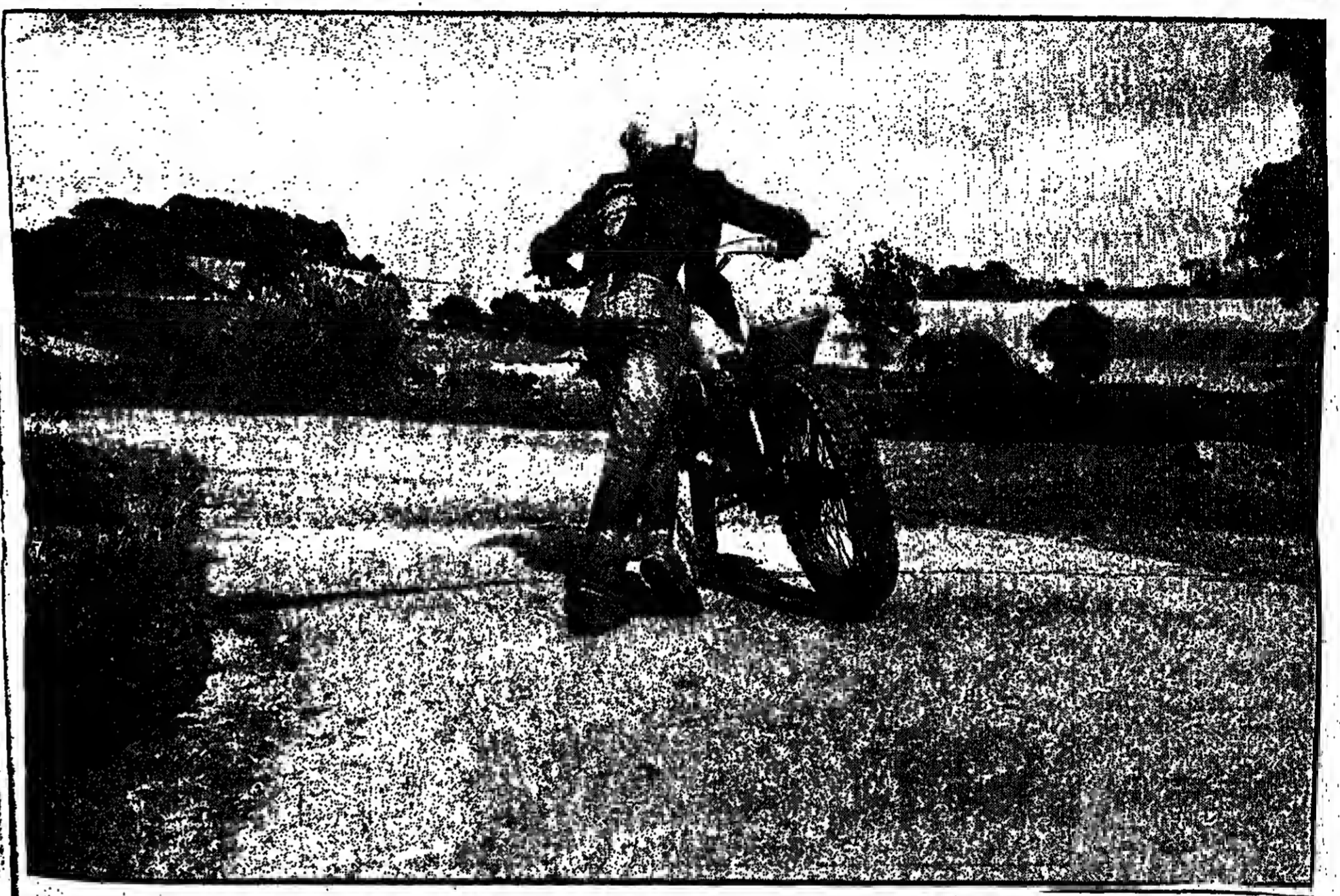
... and what goes on at the grassroots

I am all for the social and political implications of adult literacy and other educational problems being more widely understood.

The people of Dartington



The trustees of Dartington Hall asked two photographers, Christopher Schwarz and Judy Moraes, to document the life of those living and working at Dartington. These pictures, showing the school, college and tweed mill, are taken from an exhibition currently on view at the Cider Press Centre at Dartington



مجددنا من الالهي

Books/Education/Literature

A question of child's play

Joan Tamburini

History of Play. Edited by Barbara Bond and David Harvey. Heinemann £5.50. 431 069-183 5.

Many teachers of young children are reluctant to intervene in their play. They intend to be 'invisible' to the children, but subtly intervene to solve disputes among children and to direct attention to particular aspects of their play.

First there is the assumption that play is an important part of children's development. In fact, there is little doubt that play is a significant part of children's lives.

Until recent years there has been little hard research on children's play in a number of countries. Teachers have had little or nothing to go on except their own ideas.

in relation to children's intellectual development. She reports a carefully designed experiment comparing various materials and direct instruction in children's success in problem-solving tasks.

The results showed that free play with materials involving the task is as good as observing an adult demonstrating with the materials.

The authors of this book are very aware of the importance of play in children's lives. They describe a range of activities which help children to learn and to grow.

They found that the children frequently turned to their mothers in a deliberate way, as if for confirmation in their symbolic play, and that maternal participation led to a rich mother-child verbal exchange.

By contrast, children who observed the adult were less flexible and were prone to imitate an 'all or nothing' approach.

The authors of this book are very aware of the importance of play in children's lives. They describe a range of activities which help children to learn and to grow.

supported by adequate reference to the kind of research evidence reported in Biology of Play.

What the book lacks in specificity of research evidence it makes up for in part two in the detailed descriptions of children's play.

The research for this series was published for more material than could be included in the programme, and it is good that the material is preserved in a book which is easy to handle.

Cross-bearers

David Self

The Christians. By Ian Brierley. Collins. £2.50. 224 01355 6.

Among their number have those who have ruled empires, those who have been so unmercifully murdered that they have been glorified.

They are, of course, all Christians: followers of the only religion to include the degradation and rebirth of its God.

Number Crossbearers has told the story of 13 Grenada Television programmes, August, September and October. This lavishly illustrated 30-page volume is the book of the series.

The research for this series was published for more material than could be included in the programme, and it is good that the material is preserved in a book which is easy to handle.

Mr. Crossbearers comes across on the narrative and the descriptive; he tells his story in concrete form, preferring to use people rather than movements.

He does not at times seem to control his subject, and he is often led by his material, but this is a strength of the book.

It is a pity that the author does not describe the work in terms of his own faith, but in terms of the secular world.

On the dark side. By William Golding. Viking. £2.50. 2145 2295 2.

Which is complete in itself, although for final reflections on 'The Pyramid' and 'The Scorpion' he is to be read in the context of the preceding chapters.

Debate without end

Norman Evans

A Question of Schooling. By John E. C. MacBeath. Hodder and Stoughton £4.75. 340 20813 7. £2.25. 310 20814 5.

We have heard a lot about the Great Debate. We are experiencing a rhythm of financial, social, economic and intellectual development, fast moving but jerky, in which questions about the purposes of education become ever more urgent.

We have to do with a never-ending Great Debate. And it is to do with the discrepancies which all kinds of people think they can identify between what some sections of society expect from schools and what they may be very constraining in relation to what other sections of society consider schools should do.

What is what the book is about. All 14 contributors agree about three significant propositions: they are not convinced of the quality of education in our schools; they are not convinced that schools as they are are a good idea; they are not convinced that schools as they are are a good idea.

The material is good, if uneven. Some contributors from schools and three chapters on resources are less persuasive contributions, but such historical reflections as handle these issues are often more than satisfactory.

All contributors are clear that there are problems, and generally most seem to agree that there is a crisis. MacBeath says, "If quality of opportunity for education were to be realised, its starting point would have to be with the inequality of conditions outside schools."

Where does all this lead? Certainly Poulton's account of Red House in Yorkshire documents how advanced and detailed a study of the school can be made.

There is no doubt, however, that readers will find this stimulating, suggestive and uncomfortable. Like most arguments, it is unsatisfactory in some ways since there is no point in the argument, no debate.

Professor Tiger has based his study of William Golding's work on conversations he has had with the author. The main part of the book is a series of individual studies of his first five novels, each one of

Rosemary Hartill

The Novels of Virginia Woolf. By Rosemary Hartill. Methuen. £5.50. 416 82661 4.

Ten years ago, Virginia Woolf was a novelist rarely discussed in depth. Written off by the 'Scrutineers' for her 'sophisticated aestheticism' and 'lack of any positive spiritual affirmation', she was popularly patronized as a second-rate novelist.

Our guilty former neglect of her is, perhaps, not really atoned for by the Bloomsburyian which now surrounds her work.

The author's main interest in Woolf is as a woman, as an artist, as a writer, as a biographer, as a chronicler, as a critic of her own 'novels'.

William Golding's 'On the dark side' is complete in itself, although for final reflections on 'The Pyramid' and 'The Scorpion' he is to be read in the context of the preceding chapters.



Virginia Woolf is not as a great writer, she is, with Purcell, in the second rank of twentieth-century novelists.

Although apart from the Introduction this detailed and scholarly study of the novels of Virginia Woolf is a little advanced for school readers.

Handwritten notes in the left margin: 'The material is good, if uneven. Some contributors from schools and three chapters on resources are less persuasive contributions, but such historical reflections as handle these issues are often more than satisfactory.'

Words for action

Donald Hawes on English for Special Purposes

A Modern Course in Business English. Course Manual. By Anthony Hawott, John Webb and Michael Knight. Oxford University Press £3.00. 45307 5.

Talking Business also presumes that the student will have an adequate command of English. It is a practical book, which the student can use by himself.

The demand for courses in English for Special Purposes is rapidly increasing. These courses, which offer a more tailored, present a number of problems.

English for Nurses. By David Ansell and Tim Cranfield. Longman £1.10 and 55p.

English for Nurses is a clear and methodical book, with a simpler level of English than the others. It is a good teaching strategy, as they point out in their preface.

English for Nurses is a clear and methodical book, with a simpler level of English than the others. It is a good teaching strategy, as they point out in their preface.

Basic Business Arithmetic. Revised Edition. A recent reprint of this best-selling text has been replaced by a new edition with some pages from the original edition being retained.

The main difference is one of style. Dr Spock is a relaxed friend, who enjoys children and parents enjoying them.

Both doctors take much the same line on most topics. They are both in favour of breast feeding that they play down the difficulties of getting the thing going.

Among this week's contributors: Norman Evans is principal of Bishop Lonsdale College.

15 Books/EFL/Children's Literature

Readers for readers

David Self

When I was at school and learning French, 'readers' were little cloth-bound booklets about jump-thieves, gnomes and le petit mystère.

'Readers' have come a long way since then, and one of the newer and better-structured series for readers of English is the Heinemann Guided Readers.

The Beginner level booklets are 28-page, well-illustrated stories that employ a carefully controlled vocabulary.

Children's literature 'Tis almost fairy time... Stephen Corrin

British Fairy Tales. 216 90230 4. More British Fairy Tales. 216 90231 2. Fairy Tales from East and West. 216 90232 5.

The first two of these fairy tale collections are welcome releases in durable paperback form.

Why, a story-teller may well be asked, choose "Tom Tit Tot", "Cap o'Rushes" or "The Black Bull of Norway" when you have got the more dramatic, more magical, more embroidered "Rumpelstiltskin", "Cinderella" and "East of the Sun, West of the Moon"?

What is so attractive about the first two? They are both tales of a king who is reduced to a beggar, and who is restored to his throne.

Constant rereading never seems to lose the vigour and directness of stories like "Jack and the Beanstalk" or "Mr Meccano".

The Elementary level stories are considerably more demanding (but also more cheerful). The vocabulary is up to 1,100 words.

The Intermediate level books are not much harder—an additional 500 words enter the vocabulary.

At the Upper level, the stories are even more demanding.

Heinemann Guided Readers will appeal to European and Third World learners of English.

much as fresh meat needs salt," she says echoes of Cardello's neatly turned tales in the end by serving her father, honoured guest at her wedding banquet with solemn merrit.

The tales in the second British collection are mainly about demons, spell-making and the selling of souls.

They are particularly relevant, of course, today in our multicultural schools.

It is a pity that the author does not describe the work in terms of his own faith, but in terms of the secular world.

The author's main interest in Woolf is as a woman, as an artist, as a writer, as a biographer, as a chronicler, as a critic of her own 'novels'.

Handwritten notes in the right margin: 'The material is good, if uneven. Some contributors from schools and three chapters on resources are less persuasive contributions, but such historical reflections as handle these issues are often more than satisfactory.'

SECONDARY Modern Languages continued

REDBRIDGE (London Borough of) ...

RICHMOND UPON-TAMES (London Borough of) ...

SANDWELL (Metropolitan Borough of) ...

WEST SUSSEX (Metropolitan Borough of) ...

WIRRAL (Metropolitan Borough of) ...

WIRRAL (Metropolitan Borough of) ...

WIRRAL (Metropolitan Borough of) ...

WIRRAL (Metropolitan Borough of) ...

WIRRAL (Metropolitan Borough of) ...

WIRRAL (Metropolitan Borough of) ...

WIRRAL (Metropolitan Borough of) ...

WIRRAL (Metropolitan Borough of) ...

WIRRAL (Metropolitan Borough of) ...

WIRRAL (Metropolitan Borough of) ...

WIRRAL (Metropolitan Borough of)

WIRRAL (Metropolitan Borough of) ...

WIRRAL (Metropolitan Borough of) ...

WIRRAL (Metropolitan Borough of) ...

WIRRAL (Metropolitan Borough of) ...

WIRRAL (Metropolitan Borough of) ...

WIRRAL (Metropolitan Borough of) ...

WIRRAL (Metropolitan Borough of) ...

WIRRAL (Metropolitan Borough of) ...

WIRRAL (Metropolitan Borough of) ...

WIRRAL (Metropolitan Borough of) ...

WIRRAL (Metropolitan Borough of) ...

WIRRAL (Metropolitan Borough of) ...

WIRRAL (Metropolitan Borough of) ...

WIRRAL (Metropolitan Borough of) ...

Religious Education

Scale 1 Posts ...

Scale 1 Posts ...

Scale 1 Posts ...

Scale 1 Posts ...

Scale 1 Posts ...

Scale 1 Posts ...

Scale 1 Posts ...

Scale 1 Posts ...

Scale 1 Posts ...

Scale 1 Posts ...

Scale 1 Posts ...

Scale 1 Posts ...

Scale 1 Posts ...

Scale 1 Posts ...

DEBROSHIRE

DEBROSHIRE ...

DEBROSHIRE ...

DEBROSHIRE ...

DEBROSHIRE ...

DEBROSHIRE ...

DEBROSHIRE ...

DEBROSHIRE ...

DEBROSHIRE ...

DEBROSHIRE ...

DEBROSHIRE ...

DEBROSHIRE ...

DEBROSHIRE ...

DEBROSHIRE ...

DEBROSHIRE ...

HUMBERSIDE

HUMBERSIDE ...

HUMBERSIDE ...

HUMBERSIDE ...

HUMBERSIDE ...

HUMBERSIDE ...

HUMBERSIDE ...

HUMBERSIDE ...

HUMBERSIDE ...

HUMBERSIDE ...

HUMBERSIDE ...

HUMBERSIDE ...

HUMBERSIDE ...

HUMBERSIDE ...

HUMBERSIDE ...

Social Studies

Other Posts on Scale 2 and above ...

Scale 1 Posts ...

Scale 1 Posts ...

Scale 1 Posts ...

Scale 1 Posts ...

Scale 1 Posts ...

Scale 1 Posts ...

Scale 1 Posts ...

Scale 1 Posts ...

Scale 1 Posts ...

Scale 1 Posts ...

Scale 1 Posts ...

Scale 1 Posts ...

Scale 1 Posts ...

SECONDARY Technical Studies continued

WARRING ...

ESSEX ...

ESSEX ...

ESSEX ...

ESSEX ...

ESSEX ...

ESSEX ...

ESSEX ...

ESSEX ...

ESSEX ...

ESSEX ...

ESSEX ...

ESSEX ...

ESSEX ...

HUMBERSIDE

HUMBERSIDE ...

HUMBERSIDE ...

HUMBERSIDE ...

HUMBERSIDE ...

HUMBERSIDE ...

HUMBERSIDE ...

HUMBERSIDE ...

HUMBERSIDE ...

HUMBERSIDE ...

HUMBERSIDE ...

HUMBERSIDE ...

HUMBERSIDE ...

HUMBERSIDE ...

HUMBERSIDE ...

Other than by Subject Classification

Scale 1 Posts ...

Scale 1 Posts ...

Scale 1 Posts ...

Scale 1 Posts ...

Scale 1 Posts ...

Scale 1 Posts ...

Scale 1 Posts ...

Scale 1 Posts ...

Scale 1 Posts ...

Scale 1 Posts ...

Scale 1 Posts ...

Scale 1 Posts ...

Scale 1 Posts ...

Scale 1 Posts ...

Sixth Form and Tertiary Colleges

Other Posts on Scale 2 and above ...

Scale 1 Posts ...

Scale 1 Posts ...

Scale 1 Posts ...

Scale 1 Posts ...

Scale 1 Posts ...

Scale 1 Posts ...

Scale 1 Posts ...

Scale 1 Posts ...

Scale 1 Posts ...

Scale 1 Posts ...

Scale 1 Posts ...

Scale 1 Posts ...

Scale 1 Posts ...

Lancashire County Council CLOSING DATE 22nd AUGUST

PRIMARY AND SPECIAL SCHOOLS

SECONDARY SCHOOLS

Scale 1 Posts

Scale 1 Posts

Scale 1 Posts

Scale 1 Posts

Scale 1 Posts

Scale 1 Posts

Scale 1 Posts

Scale 1 Posts

City of Manchester Education Committee

City of Manchester Education Committee

Lancashire County Council CLOSING DATE 22nd AUGUST 1977

COUNTY OF SOUTH GLAMORGAN
LADY MARY RICHARDSON
 Cardiff (11-18 Comprehensive) 7 form entry

ENGLISH: Scale I
 Required for September, 1977, to teach English to 'O' and C.S.E. Level. There is a possibility of teaching to 'A' Level for a suitably qualified teacher. This is a temporary post for one term only.

ST CYRUS COMPREHENSIVE SCHOOL
 Penarth (11-18) 10 form entry

MATHEMATICS/ENGLISH: Scale I
 Required for January, 1978, or earlier if available, to teach Mathematics to C.S.E. and 'O' Level and some English in the Lower School. Previous applicants will be considered.

Application forms may be obtained from the undersigned on receipt of a stamped addressed envelope to whom completed forms should be returned within ten days of the appearance of this advertisement.
 F. J. Adams, Director of Education, Education Offices, Kingsway, Cardiff.

Inner London Education Authority

Secondary Vacancies for September 1977

The Authority would be pleased to receive applications from experienced teachers and those seeking first appointments, who are qualified in the following subjects:-

Commerce (Office Skills) Design and Technology French
 with other language at subsidiary level

Home Economics Mathematics Music Physics

Appointments will be made to a scale 1 post in the Authority's general teaching service, Inner London Allowance (£402), payable in addition to the Burnham salary.

For the appropriate application form please write to the Education Officer (TS), Room 67, The County Hall, London SE1 7PB, stating whether the application is for a first appointment or not, or you are welcome to telephone 01-533 2101 for further details.

Metropolitan Borough of Stockport

SECONDARY

Required for 1st September 1977
 Merple Hill High School, Hill Top Drive, Merple

Teacher for Physical Education
 (G118) (Rel. 634/TEB) Scale 1
 A qualified teacher for this large, mixed 11-18 comprehensive school. Merple Hill will be entering its 4th year of comprehensive development from the two single sex grammar schools which share this site with the site overlooking the River Goyt. There are two gyms and extensive playing fields. A wide range of activities, from Athletics to Yoga is offered and the school has an enviable reputation in sport. Will be expected to share in all the work of the department but a specialist in Netball and/or Athletics would be preferred.

Teacher for English
 (Rel. 634/TEB) Scale 1
 Capable of teaching the subject enthusiastically throughout the school. The junior forms are taught in mixed ability groups being regrouped into G.C.E. and O.S.E. classes in the fourth year.

Teacher for French and Spanish
 (Rel. 63/TEB) Scale 1
 To assist in the modern languages department. Main language are French and German, which have equal status, but at present Spanish is being taught to C.S.E. 'O' and 'A' level in the senior part of the school. Will be required to teach Spanish to 'A' level and French to least to 'O' level, while also contributing to the European Studies Programme in the main school. Application forms from the Director of Education, Town Hall, Stockport (quoting ref.) and returned to the Headteacher by 23rd August, 1977.

SPECIAL EDUCATION
 Scale 1 Post continued

SUFFOLK
 READING SCHOOL, 100 MILLBURN ROAD, READING RG1 1AA. The school is seeking a qualified teacher to teach in the special education department. The successful candidate will be required to teach in the special education department. The successful candidate will be required to teach in the special education department.

Geography

URGENTLY REQUIRED - Part-time Geography teacher for a girls' independent day school in the City of London. The successful candidate will be required to teach in the special education department.

History

NORTH WALKS
 HORNLEY SCHOOL, HORNLEY, LEICESTERSHIRE. The school is seeking a qualified teacher to teach in the special education department. The successful candidate will be required to teach in the special education department.

Mathematics

HEADS OF DEPARTMENT

HERTFORDSHIRE
 WATFORD SCHOOL, WATFORD, HERTS. The school is seeking a qualified teacher to teach in the special education department. The successful candidate will be required to teach in the special education department.

Other Assistants

KENT
 REIDHILL HUNTINGTON AND LILLINGTON SCHOOLS, REIDHILL, KENT. The school is seeking a qualified teacher to teach in the special education department. The successful candidate will be required to teach in the special education department.

Classics

KENT
 THE JUNIOR SCHOOL, REIDHILL, KENT. The school is seeking a qualified teacher to teach in the special education department. The successful candidate will be required to teach in the special education department.

Commercial Subjects

SURREY
 ST. CATHERINE'S SCHOOL, DUNDEE, SURREY. The school is seeking a qualified teacher to teach in the special education department. The successful candidate will be required to teach in the special education department.

Modern Languages

WILTSHIRE
 WINDSOR SCHOOL, WINDSOR, WILTSHIRE. The school is seeking a qualified teacher to teach in the special education department. The successful candidate will be required to teach in the special education department.

English

HERTFORDSHIRE
 HATFIELD SCHOOL, HATFIELD, HERTS. The school is seeking a qualified teacher to teach in the special education department. The successful candidate will be required to teach in the special education department.

Other Assistants

DUMFRIESHIRE
 WARRISTON SCHOOL, FORBES, DUMFRIESHIRE. The school is seeking a qualified teacher to teach in the special education department. The successful candidate will be required to teach in the special education department.

Music

BERKSHIRE
 LANGLEY COLLEGE OF FURTHER EDUCATION, LANGLEY, BERKSHIRE. The school is seeking a qualified teacher to teach in the special education department. The successful candidate will be required to teach in the special education department.

SURREY COUNTY COUNCIL

FRINGE AREA LONDON ALLOWANCE CSD PA THROUGHOUT THE COUNTY.

Applications for appointment to County and Voluntary Controlled Schools (except reserved teaching) effective from 1 September 1977 and later should be sent to the Education Committee's proposal to issue to Assistant Teachers on Burnham Scale 1 contract to the service of the County Council with assignment initially to the school indicated. This will mean that teachers appointed may be required to transfer to other schools at a later date.

YOUTH TUTOR
OXFORD COUNTY SCHOOL

An interesting SCALE 3 TEACHING POST, involving developmental group work with school pupils and extra-curricular activities, in liaison with the Youth Service, in a large comprehensive secondary school serving a rural area of South-East Surrey, with a purpose-built Youth wing opening Autumn 1977.

POSTS OF RESPONSIBILITY

COMPREHENSIVE
EGHAM, MAGNA CARTA SCHOOL

TECHNICAL STUDIES teacher for January to July in the team in a developing Design Department. Applicants should offer skills in a wide range of media. Scale 2 available. Telephone: Area Education Office, Woking (Woking 4311).

SCALE 1 POSTS

HORLEY, COURT LODGE COMPREHENSIVE

MATHEMATICS teacher to take subject throughout the school including Sixth Form. Scale 2, post available for suitable applicant. Telephone: Area Education Office, Reigate (Reidhill 88441).

MYTCHETT, ROBERT HAINING COUNTY SECONDARY

MATHEMATICS teacher, opportunity to contribute to 'new' approaches to teaching developing in the school. S.M.P. throughout ability range.

OXFORD COUNTY SCHOOL

MATHEMATICS. Two Assistant Teachers, one post available for a younger teacher who could work in both school, second post which could be on Scale 2 would be for a teacher capable of doing senior work to standard. Telephone: Area Education Office, Reigate (Reidhill 88441).

Modern Languages

WILTSHIRE
 WINDSOR SCHOOL, WINDSOR, WILTSHIRE. The school is seeking a qualified teacher to teach in the special education department. The successful candidate will be required to teach in the special education department.

Other Assistants

DUMFRIESHIRE
 WARRISTON SCHOOL, FORBES, DUMFRIESHIRE. The school is seeking a qualified teacher to teach in the special education department. The successful candidate will be required to teach in the special education department.

Music

BERKSHIRE
 LANGLEY COLLEGE OF FURTHER EDUCATION, LANGLEY, BERKSHIRE. The school is seeking a qualified teacher to teach in the special education department. The successful candidate will be required to teach in the special education department.

Mathematics

SURREY
 FARNHAM COLLEGE, FARNHAM, SURREY. The school is seeking a qualified teacher to teach in the special education department. The successful candidate will be required to teach in the special education department.

Pastoral

SURREY
 THE RESIDENT HOUSES, 100 MILLBURN ROAD, READING RG1 1AA. The school is seeking a qualified teacher to teach in the special education department. The successful candidate will be required to teach in the special education department.

Physical Education

ESSEX
 ST. JOHN'S SCHOOL, WITHAM, ESSEX. The school is seeking a qualified teacher to teach in the special education department. The successful candidate will be required to teach in the special education department.

Technical Studies

LONDON SE22
 WYNDHAM SCHOOL, WYNDHAM, LONDON SE22 8JN. The school is seeking a qualified teacher to teach in the special education department. The successful candidate will be required to teach in the special education department.

Other than by Subject Classification

MIDDESEX
 ST. JOHN'S SCHOOL, WITHAM, ESSEX. The school is seeking a qualified teacher to teach in the special education department. The successful candidate will be required to teach in the special education department.

Science

BRISTOL
 BRISTOL COLLEGE, BRISTOL. The school is seeking a qualified teacher to teach in the special education department. The successful candidate will be required to teach in the special education department.

Science

BERKSHIRE
 LANGLEY COLLEGE OF FURTHER EDUCATION, LANGLEY, BERKSHIRE. The school is seeking a qualified teacher to teach in the special education department. The successful candidate will be required to teach in the special education department.

Science

SURREY
 ST. JOHN'S SCHOOL, WITHAM, ESSEX. The school is seeking a qualified teacher to teach in the special education department. The successful candidate will be required to teach in the special education department.

Science

SURREY
 ST. JOHN'S SCHOOL, WITHAM, ESSEX. The school is seeking a qualified teacher to teach in the special education department. The successful candidate will be required to teach in the special education department.

Science

SURREY
 ST. JOHN'S SCHOOL, WITHAM, ESSEX. The school is seeking a qualified teacher to teach in the special education department. The successful candidate will be required to teach in the special education department.

Science

SURREY
 ST. JOHN'S SCHOOL, WITHAM, ESSEX. The school is seeking a qualified teacher to teach in the special education department. The successful candidate will be required to teach in the special education department.

Science

SURREY
 ST. JOHN'S SCHOOL, WITHAM, ESSEX. The school is seeking a qualified teacher to teach in the special education department. The successful candidate will be required to teach in the special education department.

Other than by Subject Classification

BERKSHIRE
 LANGLEY COLLEGE OF FURTHER EDUCATION, LANGLEY, BERKSHIRE. The school is seeking a qualified teacher to teach in the special education department. The successful candidate will be required to teach in the special education department.

Other than by Subject Classification

BERKSHIRE
 LANGLEY COLLEGE OF FURTHER EDUCATION, LANGLEY, BERKSHIRE. The school is seeking a qualified teacher to teach in the special education department. The successful candidate will be required to teach in the special education department.

Other than by Subject Classification

BERKSHIRE
 LANGLEY COLLEGE OF FURTHER EDUCATION, LANGLEY, BERKSHIRE. The school is seeking a qualified teacher to teach in the special education department. The successful candidate will be required to teach in the special education department.

Other than by Subject Classification

BERKSHIRE
 LANGLEY COLLEGE OF FURTHER EDUCATION, LANGLEY, BERKSHIRE. The school is seeking a qualified teacher to teach in the special education department. The successful candidate will be required to teach in the special education department.

Other than by Subject Classification

BERKSHIRE
 LANGLEY COLLEGE OF FURTHER EDUCATION, LANGLEY, BERKSHIRE. The school is seeking a qualified teacher to teach in the special education department. The successful candidate will be required to teach in the special education department.

Other than by Subject Classification

BERKSHIRE
 LANGLEY COLLEGE OF FURTHER EDUCATION, LANGLEY, BERKSHIRE. The school is seeking a qualified teacher to teach in the special education department. The successful candidate will be required to teach in the special education department.

Other than by Subject Classification

BERKSHIRE
 LANGLEY COLLEGE OF FURTHER EDUCATION, LANGLEY, BERKSHIRE. The school is seeking a qualified teacher to teach in the special education department. The successful candidate will be required to teach in the special education department.

Other than by Subject Classification

BERKSHIRE
 LANGLEY COLLEGE OF FURTHER EDUCATION, LANGLEY, BERKSHIRE. The school is seeking a qualified teacher to teach in the special education department. The successful candidate will be required to teach in the special education department.

Other than by Subject Classification

BERKSHIRE
 LANGLEY COLLEGE OF FURTHER EDUCATION, LANGLEY, BERKSHIRE. The school is seeking a qualified teacher to teach in the special education department. The successful candidate will be required to teach in the special education department.

Other than by Subject Classification

BERKSHIRE
 LANGLEY COLLEGE OF FURTHER EDUCATION, LANGLEY, BERKSHIRE. The school is seeking a qualified teacher to teach in the special education department. The successful candidate will be required to teach in the special education department.

Other than by Subject Classification

BERKSHIRE
 LANGLEY COLLEGE OF FURTHER EDUCATION, LANGLEY, BERKSHIRE. The school is seeking a qualified teacher to teach in the special education department. The successful candidate will be required to teach in the special education department.

CITY OF BIRMINGHAM EDUCATION DEPARTMENT

TECHNICAL COLLEGE
 DEPARTMENT OF GENERAL STUDIES. The school is seeking a qualified teacher to teach in the special education department. The successful candidate will be required to teach in the special education department.

TECHNICAL COLLEGE
 DEPARTMENT OF GENERAL STUDIES. The school is seeking a qualified teacher to teach in the special education department. The successful candidate will be required to teach in the special education department.

TECHNICAL COLLEGE
 DEPARTMENT OF GENERAL STUDIES. The school is seeking a qualified teacher to teach in the special education department. The successful candidate will be required to teach in the special education department.

TECHNICAL COLLEGE
 DEPARTMENT OF GENERAL STUDIES. The school is seeking a qualified teacher to teach in the special education department. The successful candidate will be required to teach in the special education department.

TECHNICAL COLLEGE
 DEPARTMENT OF GENERAL STUDIES. The school is seeking a qualified teacher to teach in the special education department. The successful candidate will be required to teach in the special education department.

TECHNICAL COLLEGE
 DEPARTMENT OF GENERAL STUDIES. The school is seeking a qualified teacher to teach in the special education department. The successful candidate will be required to teach in the special education department.

TECHNICAL COLLEGE
 DEPARTMENT OF GENERAL STUDIES. The school is seeking a qualified teacher to teach in the special education department. The successful candidate will be required to teach in the special education department.

TECHNICAL COLLEGE
 DEPARTMENT OF GENERAL STUDIES. The school is seeking a qualified teacher to teach in the special education department. The successful candidate will be required to teach in the special education department.

TECHNICAL COLLEGE
 DEPARTMENT OF GENERAL STUDIES. The school is seeking a qualified teacher to teach in the special education department. The successful candidate will be required to teach in the special education department.

TECHNICAL COLLEGE
 DEPARTMENT OF GENERAL STUDIES. The school is seeking a qualified teacher to teach in the special education department. The successful candidate will be required to teach in the special education department.

TECHNICAL COLLEGE
 DEPARTMENT OF GENERAL STUDIES. The school is seeking a qualified teacher to teach in the special education department. The successful candidate will be required to teach in the special education department.

FOR SALE AND WANTED

If you have something to sell or something you want to buy, your fellow readers of the TES might be the right people to talk to. There are over 500,000 of them and an advertisement could cost as little as £1.98.

If you are interested please ring Mrs Annice Lightfoot, The Times Educational Supplement, Gray's Inn Road, London WC1X 8EZ. Telephone 01-837 1234.



If you buy anything for your school - first check the advertisements in THE TIMES Educational Supplement

Metropolitan Borough of Rochdale
 EDUCATION DEPARTMENT
SPECIAL EDUCATION
 Knowl View
 (Mildly/adjusted boys residential) (All age)
 Norden Road, Bamford, Rochdale OL11 5PT
 Tel. Rochdale 48287

Physical Education

Required initially for one term only, an experienced teacher of P.E. at the residential school for mildly/adjusted boys. Experience of residential work an advantage.

Application forms, (please enclose a foolscap stamped addressed envelope) available from the Chief Education Officer, Education Department, Municipal Buildings, Manchester Old Road, Middleton, Manchester M24 4EA to whom they should be returned not later than 22nd August 1977.

T.E.F.L.

Required September, experienced, qualified teacher of English Language for International Boarding College.

Minimum teaching 5 hours daily.
 Salary £5,000 for suitable candidate.

Applications and names of three referees should be sent to:
 The Secretary,
 Toddington Manor College,
 Nr. Cheltenham,
 Gloucestershire. GL54 4DN

COLLEGES OF EDUCATION

LONDON

PHILIPPS COLLEGE

Applications are invited for a limited number of places for the 1978-79 year on a full-time basis. The college is situated in the heart of London and offers a wide range of courses. Details of the college and its facilities are available on request. Applications should be sent to the Registrar, Philipps College, 100, Strand, London WC2R 0JH.

NOTTINGHAMSHIRE

COMMUNITY HOMES AND ASSOCIATED INSTITUTIONS

Applications are invited for a limited number of places for the 1978-79 year on a full-time basis. The college is situated in the heart of London and offers a wide range of courses. Details of the college and its facilities are available on request. Applications should be sent to the Registrar, Philipps College, 100, Strand, London WC2R 0JH.

AVON COUNTY

COMMUNITY HOMES AND ASSOCIATED INSTITUTIONS

Applications are invited for a limited number of places for the 1978-79 year on a full-time basis. The college is situated in the heart of London and offers a wide range of courses. Details of the college and its facilities are available on request. Applications should be sent to the Registrar, Philipps College, 100, Strand, London WC2R 0JH.

WILTSHIRE

COMMUNITY HOMES AND ASSOCIATED INSTITUTIONS

Applications are invited for a limited number of places for the 1978-79 year on a full-time basis. The college is situated in the heart of London and offers a wide range of courses. Details of the college and its facilities are available on request. Applications should be sent to the Registrar, Philipps College, 100, Strand, London WC2R 0JH.

BIRMINGHAM

COMMUNITY HOMES AND ASSOCIATED INSTITUTIONS

Applications are invited for a limited number of places for the 1978-79 year on a full-time basis. The college is situated in the heart of London and offers a wide range of courses. Details of the college and its facilities are available on request. Applications should be sent to the Registrar, Philipps College, 100, Strand, London WC2R 0JH.

LANCASHIRE

COMMUNITY HOMES AND ASSOCIATED INSTITUTIONS

Applications are invited for a limited number of places for the 1978-79 year on a full-time basis. The college is situated in the heart of London and offers a wide range of courses. Details of the college and its facilities are available on request. Applications should be sent to the Registrar, Philipps College, 100, Strand, London WC2R 0JH.

LONDON

INNER LONDON EDUCATION AUTHORITY

Applications are invited for a limited number of places for the 1978-79 year on a full-time basis. The college is situated in the heart of London and offers a wide range of courses. Details of the college and its facilities are available on request. Applications should be sent to the Registrar, Philipps College, 100, Strand, London WC2R 0JH.

OVERSEAS DEVELOPMENT

KNOW-HOW vital to developing countries

Gilbert Islands: Primary Education Headteacher

To teach general subjects to 9-11-year-olds; supervise other members of staff; be responsible for the efficient organisation and operation of school; devise and implement teaching programmes consistent with development of primary education.

Assistant Teacher

To teach general subjects to 5-7-year-olds; assist and support headteacher in overall day to day management of school and in formulation and implementation of teaching programmes. Applicants up to age 35, either graduates or non-graduates, but must have a minimum of 3 years' primary experience teaching general subjects to the age groups concerned. An ability to work with children from varying educational, social and cultural backgrounds essential. An interest in extra-curricular activities and ability to play/teach a musical instrument an advantage. These posts would be suitable for a husband and wife team although other candidates will be considered. Appointment 2 years. Salary in range: £3,730-£7,847 p.a. including allowance, normally tax-free, in range of £2,304-£4,818 p.a.

Solomon Islands: Secondary Education English Teacher

To teach throughout school up to and including Sixth form; assist with curriculum development; assist with extra-curricular activities; undertake boarding duties. Applicants, aged 25-65, should have degree in English, a Certificate of Education and a minimum of three years' secondary teaching experience, preferably in a developing country. Experience of a co-educational boarding school an advantage. Appointment two years. Salary in range: £4,790-£8,610 p.a. including allowance normally tax-free, in range £2,460-£3,980 p.a. (currency under review).

Botswana: Primary Teacher Educators: Science

To assist with initial training of teachers; assist in primary schools, making frequent informal visits; to consider alternative approaches to primary syllabus; to be engaged in programme of in-service work. Applicants, under 45, must be trained teachers with at least eight years' primary teaching experience. Appointment 2-3 years. Salary in range: £3,266-£7,715 p.a. including allowance, normally tax free, in range £1,782-£3,204 p.a. Other benefits include free family passages, children's education allowance and subsidised accommodation. An appointment grant up to £300 and an interest free car purchase loan up to £1,200 may be payable in certain circumstances. Terminal gratuity 28 per cent per annum of basic salary. Superannuation rights may be safeguarded. Applicants should be citizens of the United Kingdom. For full details and application form please apply, quoting Ref. 315 clearly stating post concerned, and giving details of age, qualifications and experience to:

Appointments Officer,
MINISTRY OF OVERSEAS DEVELOPMENT,
Room 301, Eland House,
Stag Place, London SW1E 5DH.

WILTSHIRE

COMMUNITY HOMES AND ASSOCIATED INSTITUTIONS

Applications are invited for a limited number of places for the 1978-79 year on a full-time basis. The college is situated in the heart of London and offers a wide range of courses. Details of the college and its facilities are available on request. Applications should be sent to the Registrar, Philipps College, 100, Strand, London WC2R 0JH.

LANCASHIRE

COMMUNITY HOMES AND ASSOCIATED INSTITUTIONS

Applications are invited for a limited number of places for the 1978-79 year on a full-time basis. The college is situated in the heart of London and offers a wide range of courses. Details of the college and its facilities are available on request. Applications should be sent to the Registrar, Philipps College, 100, Strand, London WC2R 0JH.

LONDON

INNER LONDON EDUCATION AUTHORITY

Applications are invited for a limited number of places for the 1978-79 year on a full-time basis. The college is situated in the heart of London and offers a wide range of courses. Details of the college and its facilities are available on request. Applications should be sent to the Registrar, Philipps College, 100, Strand, London WC2R 0JH.

OVERSEAS DEVELOPMENT

KNOW-HOW vital to developing countries

Adviser on primary and compensatory education Malaysia

At Curriculum Development Centre, Kuala Lumpur to advise and assist on development and experimentation of an integrated approach of curriculum presentation involving classroom teachers. Assist on development of diagnostic instruments for identifying primary pupil learning problems and of remedial programmes. Applicants should have appropriate academic and professional qualifications and extensive primary experience in innovative primary and compensatory education practices. Appointment two years. Salary according to qualifications and experience plus variable tax free overseas allowance in range £1,415-£3,590 per annum. Superannuation rights may be safeguarded. The post is wholly financed by the British Government under Britain's programme of aid to the developing countries. In addition to basic salary and overseas allowances other benefits normally include paid leave; free family passages; children's education allowances and holiday visits; free accommodation and medical attention. Applicants should be citizens of the United Kingdom. For full details and application form please apply quoting Ref. 317 clearly stating post concerned, and giving details of age, qualifications and experience to:

Appointments Officer,
MINISTRY OF OVERSEAS DEVELOPMENT,
Room 301, Eland House,
Stag Place, London SW1E 5DH.

OVERSEAS DEVELOPMENT

KNOW-HOW vital to developing countries

Adviser on primary and compensatory education Malaysia

At Curriculum Development Centre, Kuala Lumpur to advise and assist on development and experimentation of an integrated approach of curriculum presentation involving classroom teachers. Assist on development of diagnostic instruments for identifying primary pupil learning problems and of remedial programmes. Applicants should have appropriate academic and professional qualifications and extensive primary experience in innovative primary and compensatory education practices. Appointment two years. Salary according to qualifications and experience plus variable tax free overseas allowance in range £1,415-£3,590 per annum. Superannuation rights may be safeguarded. The post is wholly financed by the British Government under Britain's programme of aid to the developing countries. In addition to basic salary and overseas allowances other benefits normally include paid leave; free family passages; children's education allowances and holiday visits; free accommodation and medical attention. Applicants should be citizens of the United Kingdom. For full details and application form please apply quoting Ref. 317 clearly stating post concerned, and giving details of age, qualifications and experience to:

Appointments Officer,
MINISTRY OF OVERSEAS DEVELOPMENT,
Room 301, Eland House,
Stag Place, London SW1E 5DH.

EDUCATIONAL STAFF VACANCIES

KANO State Polytechnic, NIGERIA

As part of the major educational programme, the Kano State Polytechnic is inviting applications from suitably qualified candidates for the following are substantial fringe benefits.

Deputy Chief Education Officers

Minimum qualifications are a good honours degree including post graduate qualification and a diploma in teaching with at least twelve years experience.

Salary scale: £6,470-£7,270 plus benefits.

Senior Masters Grade II

Minimum qualifications are a good honours degree with a diploma in teaching and at least 7 years experience.

Salary scale: £4,550-£5,360 plus benefits.

Masters Grade I

Minimum qualifications are a good honours degree with a diploma and at least 4 years experience.

Salary scale: £3,640-£4,450 plus benefits.

Senior Masters Grade I

Minimum qualifications are a good honours degree with a diploma in teaching and at least 10 years experience.

Salary scale: £5,920-£6,460 plus benefits.

Masters Grade II

Minimum qualification is a good honours degree.

Salary scale: £2,720-£3,470 plus benefits.

ADDITIONAL BENEFITS AND GUARANTEES

In addition to the basic salary, the following fringe benefits will be provided:

- An additional 15% of the agreed salary will be paid monthly.
- At the expiry of the contract there will be guaranteed payment of 10% to 15% of the total contract salary.
- Home leave including travel costs will be provided every 12 to 18 months.
- A house including part furniture and furnishings will be provided at a rent equal to 10% of the basic salary.
- Car purchase loans will be provided at 3% interest plus an allowance of approximately £42 per month motoring expenses and an official mileage allowance.
- Income Tax is approximately 15% of salary.

*All salary levels are subject to the exchange rate at date of contract.

TEACHING CATEGORIES REQUIRED

Experienced teachers are required in all school subjects including the following:

English; Mathematics; Geography; History; Social Studies; General Science; Physical Health Education; Agricultural Science; Home Economics; Education; Biology;

Physics; Chemistry; Art/Wood Working; Hausa; French; Commercial Education; Bricklaying; Carpentry; Refrigeration and Airconditioning; Radio and TV; Plumbing; Typewriting and Shorthand; Commerce and Economics; Bookkeeping and Accounting;

Technical Drawing; Metal Working; Wood Working; Tool Making; Cabinet Making; Motor Mechanics; Electrical; Agricultural Mechanics.

Applicants in technical subjects should have an HNC Certificate or its equivalent. Applications from people with the right technical qualifications but no practical teaching experience will be considered.

METHODS OF APPLICATION

Candidates are required to submit three copies of their Curriculum Vitae together with three recent passport size photographs and three photostat copies of their qualifications and/or certificates. In particular, the following information must be provided:

- Qualifications: dates and detailed transcripts including subjects taken;
- Teaching experience including schools taught with dates;
- Present employment;
- Full postal address including telephone number;
- Two written references should be attached to the application, one of which must be your present employer or principal professor.

Alternatively, candidates may collect an application form from the Recruitment Office at the address below:

All applications should be sent by registered post quoting reference KSP/T to:
The Recruitment Office, Nigerian High Commission, 9 Northumberland Avenue, London WC2.
Clearly print on the back of the envelope For Kano Polytechnic

ADMINISTRATION CONTINUED

YOUTH TRUSTELS ASSOCIATION

YOUTH TRUSTELS ASSOCIATION... This is a new project to be opened shortly...

Child Care

SENIOR HOUSEPAINT REQUIRED

Accommodation for state... SENIOR HOUSEPAINT REQUIRED... Telephone: 021-850 5271.

Educational Psychologists

AVON COUNTY EDUCATIONAL PSYCHOLOGY... Applications should be sent to the Director of Education...

EDUCATION DEPARTMENT CITY CARE PROJECT

EDUCATION DEPARTMENT CITY CARE PROJECT... An alternative to residential care... £3,021-£7,162 (includes supplements)

NEWHAM EDUCATIONAL PSYCHOLOGIST

NEWHAM EDUCATIONAL PSYCHOLOGIST... Applications should be sent to the Director of Education...

coventry

coventry... Applications should be sent to the Director of Education...

GORDON TERRACE - PLYMOUTH, DEVON

THIRD SENIOR HOME TUTOR

GORDON TERRACE - PLYMOUTH, DEVON... THIRD SENIOR HOME TUTOR... Applications should be sent to the Director of Education...

Bedfordshire E.E.C. Mother Tongue and Culture Project

Bedfordshire E.E.C. Mother Tongue and Culture Project... Applications should be sent to the Director of Education...

There's more to being cabin crew than just travelling... British Airways

METROPOLITAN BOROUGH OF STOCKPORT SENIOR CAREERS OFFICER

METROPOLITAN BOROUGH OF STOCKPORT SENIOR CAREERS OFFICER... Main duties are undertaking vocational guidance and placement work...

KENT County Council Education Committee CAREERS SERVICE

KENT County Council Education Committee CAREERS SERVICE... CAREERS OFFICER FOR SPECIAL SERVICES... Salary: £3,825-£4,025 plus supplement

Deputy Principal Careers Officer

Deputy Principal Careers Officer... Salary: £5,001 - £5,304 or £5,001 - £5,562 or £5,304 - £5,889 plus 5% supplement

coventry

CAREERS OFFICER

CAREERS OFFICER... Applications should be sent to the Director of Education...

Essex County Council

Essex County Council... Applications should be sent to the Director of Education...

ADMINISTRATION Local Education Authority continued

KNOWSLEY

KNOWSLEY... Applications should be sent to the Director of Education...

NEWCASTLE upon Tyne

NEWCASTLE upon Tyne... Applications should be sent to the Director of Education...

NOFOLK

NOFOLK... Applications should be sent to the Director of Education...

SEFTON

SEFTON... Applications should be sent to the Director of Education...

SOUTH GLAMORGAN

SOUTH GLAMORGAN... Applications should be sent to the Director of Education...

SUNDERLAND

SUNDERLAND... Applications should be sent to the Director of Education...

SUFFOLK

SUFFOLK... Applications should be sent to the Director of Education...

SUFFOLK FOUNDATION

SUFFOLK FOUNDATION... Applications should be sent to the Director of Education...

SUNDERLAND

SUNDERLAND... Applications should be sent to the Director of Education...

SUNDERLAND... Applications should be sent to the Director of Education...

WEST SUSSEX

WEST SUSSEX... Applications should be sent to the Director of Education...

General

General... Applications should be sent to the Director of Education...

ASSISTANT FOR EXAMINATION OFFICE

ASSISTANT FOR EXAMINATION OFFICE... Applications should be sent to the Director of Education...

EXETER

EXETER... Applications should be sent to the Director of Education...

LONDON

LONDON... Applications should be sent to the Director of Education...

LONDON

LONDON... Applications should be sent to the Director of Education...

NATIONAL SOCIETY FOR MANICAPPED CHILDREN

NATIONAL SOCIETY FOR MANICAPPED CHILDREN... Applications should be sent to the Director of Education...

SUFFOLK

SUFFOLK... Applications should be sent to the Director of Education...

SUFFOLK FOUNDATION

SUFFOLK FOUNDATION... Applications should be sent to the Director of Education...

SUNDERLAND

SUNDERLAND... Applications should be sent to the Director of Education...

SUNDERLAND... Applications should be sent to the Director of Education...

Cumbria Education Careers Service

Division Careers Officer

Division Careers Officer... Applications should be sent to the Director of Education...

THE NATIONAL COMMITTEE FOR AUDIO VISUAL AIDS IN EDUCATION

THE NATIONAL COMMITTEE FOR AUDIO VISUAL AIDS IN EDUCATION... Applications should be sent to the Director of Education...

1. Assistant Secretary to the National Committee

1. Assistant Secretary to the National Committee... Applications should be sent to the Director of Education...

2. Secretary/Assistant Registrar to the Training Department of the National Committee

2. Secretary/Assistant Registrar to the Training Department of the National Committee... Applications should be sent to the Director of Education...

MULBERRY BUSH SCHOOL, STANDLAKE, OXON

MULBERRY BUSH SCHOOL, STANDLAKE, OXON... Applications should be sent to the Director of Education...

coventry

Bedfordshire

E.E.C. Mother Tongue and Culture Project

E.E.C. Mother Tongue and Culture Project... Applications should be sent to the Director of Education...

GORDON TERRACE - PLYMOUTH, DEVON

THIRD SENIOR HOME TUTOR

GORDON TERRACE - PLYMOUTH, DEVON... THIRD SENIOR HOME TUTOR... Applications should be sent to the Director of Education...

Bedfordshire E.E.C. Mother Tongue and Culture Project

Bedfordshire E.E.C. Mother Tongue and Culture Project... Applications should be sent to the Director of Education...

There's more to being cabin crew than just travelling... British Airways

ADMINISTRATION CONTINUED

YOUTH TRUSTELS ASSOCIATION

YOUTH TRUSTELS ASSOCIATION... This is a new project to be opened shortly...

Child Care

SENIOR HOUSEPAINT REQUIRED

Accommodation for state... SENIOR HOUSEPAINT REQUIRED... Telephone: 021-850 5271.

Educational Psychologists

AVON COUNTY EDUCATIONAL PSYCHOLOGY... Applications should be sent to the Director of Education...

EDUCATION DEPARTMENT CITY CARE PROJECT

EDUCATION DEPARTMENT CITY CARE PROJECT... An alternative to residential care... £3,021-£7,162 (includes supplements)

NEWHAM EDUCATIONAL PSYCHOLOGIST

NEWHAM EDUCATIONAL PSYCHOLOGIST... Applications should be sent to the Director of Education...

coventry

coventry... Applications should be sent to the Director of Education...

GORDON TERRACE - PLYMOUTH, DEVON

THIRD SENIOR HOME TUTOR

GORDON TERRACE - PLYMOUTH, DEVON... THIRD SENIOR HOME TUTOR... Applications should be sent to the Director of Education...

Bedfordshire E.E.C. Mother Tongue and Culture Project

Bedfordshire E.E.C. Mother Tongue and Culture Project... Applications should be sent to the Director of Education...

There's more to being cabin crew than just travelling... British Airways

ADMINISTRATION CONTINUED

YOUTH TRUSTELS ASSOCIATION

YOUTH TRUSTELS ASSOCIATION... This is a new project to be opened shortly...

Child Care

SENIOR HOUSEPAINT REQUIRED

Accommodation for state... SENIOR HOUSEPAINT REQUIRED... Telephone: 021-850 5271.

Educational Psychologists

AVON COUNTY EDUCATIONAL PSYCHOLOGY... Applications should be sent to the Director of Education...

EDUCATION DEPARTMENT CITY CARE PROJECT

EDUCATION DEPARTMENT CITY CARE PROJECT... An alternative to residential care... £3,021-£7,162 (includes supplements)

NEWHAM EDUCATIONAL PSYCHOLOGIST

NEWHAM EDUCATIONAL PSYCHOLOGIST... Applications should be sent to the Director of Education...

coventry

coventry... Applications should be sent to the Director of Education...

GORDON TERRACE - PLYMOUTH, DEVON

THIRD SENIOR HOME TUTOR

GORDON TERRACE - PLYMOUTH, DEVON... THIRD SENIOR HOME TUTOR... Applications should be sent to the Director of Education...

Bedfordshire E.E.C. Mother Tongue and Culture Project

Bedfordshire E.E.C. Mother Tongue and Culture Project... Applications should be sent to the Director of Education...

There's more to being cabin crew than just travelling... British Airways

THE ASSOCIATED EXAMINING BOARD

THE ASSOCIATED EXAMINING BOARD... Applications should be sent to the Director of Education...

Child Care

SENIOR HOUSEPAINT REQUIRED

Accommodation for state... SENIOR HOUSEPAINT REQUIRED... Telephone: 021-850 5271.

Educational Psychologists

AVON COUNTY EDUCATIONAL PSYCHOLOGY... Applications should be sent to the Director of Education...

EDUCATION DEPARTMENT CITY CARE PROJECT

EDUCATION DEPARTMENT CITY CARE PROJECT... An alternative to residential care... £3,021-£7,162 (includes supplements)

NEWHAM EDUCATIONAL PSYCHOLOGIST

NEWHAM EDUCATIONAL PSYCHOLOGIST... Applications should be sent to the Director of Education...

coventry

coventry... Applications should be sent to the Director of Education...

GORDON TERRACE - PLYMOUTH, DEVON

THIRD SENIOR HOME TUTOR

GORDON TERRACE - PLYMOUTH, DEVON... THIRD SENIOR HOME TUTOR... Applications should be sent to the Director of Education...

Bedfordshire E.E.C. Mother Tongue and Culture Project

Bedfordshire E.E.C. Mother Tongue and Culture Project... Applications should be sent to the Director of Education...

There's more to being cabin crew than just travelling... British Airways

SURREY

SURREY... Applications should be sent to the Director of Education...

Child Care

SENIOR HOUSEPAINT REQUIRED

Accommodation for state... SENIOR HOUSEPAINT REQUIRED... Telephone: 021-850 5271.

Educational Psychologists

AVON COUNTY EDUCATIONAL PSYCHOLOGY... Applications should be sent to the Director of Education...

EDUCATION DEPARTMENT CITY CARE PROJECT

EDUCATION DEPARTMENT CITY CARE PROJECT... An alternative to residential care... £3,021-£7,162 (includes supplements)

NEWHAM EDUCATIONAL PSYCHOLOGIST

NEWHAM EDUCATIONAL PSYCHOLOGIST... Applications should be sent to the Director of Education...

coventry

coventry... Applications should be sent to the Director of Education...

GORDON TERRACE - PLYMOUTH, DEVON

THIRD SENIOR HOME TUTOR

GORDON TERRACE - PLYMOUTH, DEVON... THIRD SENIOR HOME TUTOR... Applications should be sent to the Director of Education...

Bedfordshire E.E.C. Mother Tongue and Culture Project

Bedfordshire E.E.C. Mother Tongue and Culture Project... Applications should be sent to the Director of Education...

There's more to being cabin crew than just travelling... British Airways

DIRECTOR OF STUDIES

combining the tasks of EFL SUPERVISION, TEACHER TRAINING AND ADMINISTRATION

Applications are invited by an internationally known organisation running short-term English language courses. Head Office one hour from London in sought-after residential area.

EFL TEACHERS

Applications are invited from qualified and experienced teachers of English as a Foreign Language for full-time posts from September and October onwards.

Apply in writing with full curriculum vitae to The Principal, St. Giles School of English, 18 Cromwell Road, Hove, Sussex, BN3 3EW

HEAD OF RESEARCH AND DEVELOPMENT UNIT

to be based in London or Brighton. Recognised English Language School invites applications from candidates with the following qualifications: relevant postgraduate degree(s)/diploma(s); min. 5 years' EFL experience—preferably including teacher-training and production of ESP materials.

Please write, enclosing cv, to: Rachel Belgrave, Regent School, 148-150 Camden High Street, London NW1 0NG. (Details of appointment will be sent to suitable applicants by return of post.)

SAINT CLARE'S HALL, OXFORD

Recognized by the Department of Education and Science Founder Member of ARELS E.F.L. COURSE Applications are invited from graduates with relevant experience for the post of: TUTOR IN ENGLISH AS A FOREIGN LANGUAGE

The post may be full or part-time, commencing in September, 1977. Application forms and further details will be obtained from: THE COLLEGE SECRETARIES, St. Clare's Hall, 139 Babbyrton Road, Oxford OX2 7AL

MISCELLANEOUS

CLAVY CHURCH COUNCIL. Applications are invited for the post of Director of Studies.

Applications are invited by an internationally known organisation running short-term English language courses.

This is a senior appointment with excellent prospects with one of the leading organisations in its field.

The knowledge of one or more foreign languages and a willingness to travel may earn preference.

Salary in the region of £5,000 with fringe benefits and remittance allowance.

Apply to: Mrs. M. J. P. Jones, The Principal, St. Giles School of English, 18 Cromwell Road, Hove, Sussex, BN3 3EW

HEARFORD AND WORCESTER

County Council of Education Department. The new institutional V.O. in the high schools and colleges are invited to apply.

Applications are invited from qualified and experienced teachers of English as a Foreign Language for full-time posts from September and October onwards.

Apply in writing with full curriculum vitae to The Principal, St. Giles School of English, 18 Cromwell Road, Hove, Sussex, BN3 3EW

Applications are invited from candidates with the following qualifications: relevant postgraduate degree(s)/diploma(s); min. 5 years' EFL experience—preferably including teacher-training and production of ESP materials.

Please write, enclosing cv, to: Rachel Belgrave, Regent School, 148-150 Camden High Street, London NW1 0NG.

LONDON

UNIVERSITY OF LONDON. Applications are invited for the post of Director of Studies.

Applications are invited from qualified and experienced teachers of English as a Foreign Language for full-time posts from September and October onwards.

Apply in writing with full curriculum vitae to The Principal, St. Giles School of English, 18 Cromwell Road, Hove, Sussex, BN3 3EW

DORESET

Applications are invited from candidates with the following qualifications: relevant postgraduate degree(s)/diploma(s); min. 5 years' EFL experience—preferably including teacher-training and production of ESP materials.

Please write, enclosing cv, to: Rachel Belgrave, Regent School, 148-150 Camden High Street, London NW1 0NG.

Applications are invited from qualified and experienced teachers of English as a Foreign Language for full-time posts from September and October onwards.

DORESET

Applications are invited from candidates with the following qualifications: relevant postgraduate degree(s)/diploma(s); min. 5 years' EFL experience—preferably including teacher-training and production of ESP materials.

Please write, enclosing cv, to: Rachel Belgrave, Regent School, 148-150 Camden High Street, London NW1 0NG.

PARIS

Applications are invited from candidates with the following qualifications: relevant postgraduate degree(s)/diploma(s); min. 5 years' EFL experience—preferably including teacher-training and production of ESP materials.

Please write, enclosing cv, to: Rachel Belgrave, Regent School, 148-150 Camden High Street, London NW1 0NG.

LONDON, W.1

Applications are invited from candidates with the following qualifications: relevant postgraduate degree(s)/diploma(s); min. 5 years' EFL experience—preferably including teacher-training and production of ESP materials.

Please write, enclosing cv, to: Rachel Belgrave, Regent School, 148-150 Camden High Street, London NW1 0NG.

OXFORD

Applications are invited from candidates with the following qualifications: relevant postgraduate degree(s)/diploma(s); min. 5 years' EFL experience—preferably including teacher-training and production of ESP materials.

Please write, enclosing cv, to: Rachel Belgrave, Regent School, 148-150 Camden High Street, London NW1 0NG.

R.S.A. CERTIFICATE

Applications are invited from candidates with the following qualifications: relevant postgraduate degree(s)/diploma(s); min. 5 years' EFL experience—preferably including teacher-training and production of ESP materials.

Please write, enclosing cv, to: Rachel Belgrave, Regent School, 148-150 Camden High Street, London NW1 0NG.

SENIOR TEACHER

Applications are invited from candidates with the following qualifications: relevant postgraduate degree(s)/diploma(s); min. 5 years' EFL experience—preferably including teacher-training and production of ESP materials.

Please write, enclosing cv, to: Rachel Belgrave, Regent School, 148-150 Camden High Street, London NW1 0NG.

SPRINGFIELD

Applications are invited from candidates with the following qualifications: relevant postgraduate degree(s)/diploma(s); min. 5 years' EFL experience—preferably including teacher-training and production of ESP materials.

Please write, enclosing cv, to: Rachel Belgrave, Regent School, 148-150 Camden High Street, London NW1 0NG.

Applications are invited from candidates with the following qualifications: relevant postgraduate degree(s)/diploma(s); min. 5 years' EFL experience—preferably including teacher-training and production of ESP materials.

APPOINTMENTS

Applications are invited from candidates with the following qualifications: relevant postgraduate degree(s)/diploma(s); min. 5 years' EFL experience—preferably including teacher-training and production of ESP materials.

Please write, enclosing cv, to: Rachel Belgrave, Regent School, 148-150 Camden High Street, London NW1 0NG.

EDUCATIONAL COURSES

Applications are invited from candidates with the following qualifications: relevant postgraduate degree(s)/diploma(s); min. 5 years' EFL experience—preferably including teacher-training and production of ESP materials.

Please write, enclosing cv, to: Rachel Belgrave, Regent School, 148-150 Camden High Street, London NW1 0NG.

WORKING TEACHERS

Applications are invited from candidates with the following qualifications: relevant postgraduate degree(s)/diploma(s); min. 5 years' EFL experience—preferably including teacher-training and production of ESP materials.

Please write, enclosing cv, to: Rachel Belgrave, Regent School, 148-150 Camden High Street, London NW1 0NG.

AWARDS AND SCHOLARSHIPS

Applications are invited from candidates with the following qualifications: relevant postgraduate degree(s)/diploma(s); min. 5 years' EFL experience—preferably including teacher-training and production of ESP materials.

Please write, enclosing cv, to: Rachel Belgrave, Regent School, 148-150 Camden High Street, London NW1 0NG.

PERSONAL

Applications are invited from candidates with the following qualifications: relevant postgraduate degree(s)/diploma(s); min. 5 years' EFL experience—preferably including teacher-training and production of ESP materials.

Please write, enclosing cv, to: Rachel Belgrave, Regent School, 148-150 Camden High Street, London NW1 0NG.

ANNOUNCEMENTS

Applications are invited from candidates with the following qualifications: relevant postgraduate degree(s)/diploma(s); min. 5 years' EFL experience—preferably including teacher-training and production of ESP materials.

Please write, enclosing cv, to: Rachel Belgrave, Regent School, 148-150 Camden High Street, London NW1 0NG.

EMIGRATE

Applications are invited from candidates with the following qualifications: relevant postgraduate degree(s)/diploma(s); min. 5 years' EFL experience—preferably including teacher-training and production of ESP materials.

Please write, enclosing cv, to: Rachel Belgrave, Regent School, 148-150 Camden High Street, London NW1 0NG.

Applications are invited from candidates with the following qualifications: relevant postgraduate degree(s)/diploma(s); min. 5 years' EFL experience—preferably including teacher-training and production of ESP materials.

EDUCATIONAL COURSES

Applications are invited from candidates with the following qualifications: relevant postgraduate degree(s)/diploma(s); min. 5 years' EFL experience—preferably including teacher-training and production of ESP materials.

Please write, enclosing cv, to: Rachel Belgrave, Regent School, 148-150 Camden High Street, London NW1 0NG.

EXHIBITIONS

Applications are invited from candidates with the following qualifications: relevant postgraduate degree(s)/diploma(s); min. 5 years' EFL experience—preferably including teacher-training and production of ESP materials.

Please write, enclosing cv, to: Rachel Belgrave, Regent School, 148-150 Camden High Street, London NW1 0NG.

ENTERTAINMENTS

Applications are invited from candidates with the following qualifications: relevant postgraduate degree(s)/diploma(s); min. 5 years' EFL experience—preferably including teacher-training and production of ESP materials.

Please write, enclosing cv, to: Rachel Belgrave, Regent School, 148-150 Camden High Street, London NW1 0NG.

FOR SALE AND WANTED

Applications are invited from candidates with the following qualifications: relevant postgraduate degree(s)/diploma(s); min. 5 years' EFL experience—preferably including teacher-training and production of ESP materials.

Please write, enclosing cv, to: Rachel Belgrave, Regent School, 148-150 Camden High Street, London NW1 0NG.

POSTAL SHOPPING

Applications are invited from candidates with the following qualifications: relevant postgraduate degree(s)/diploma(s); min. 5 years' EFL experience—preferably including teacher-training and production of ESP materials.

Please write, enclosing cv, to: Rachel Belgrave, Regent School, 148-150 Camden High Street, London NW1 0NG.

PERSONAL

Applications are invited from candidates with the following qualifications: relevant postgraduate degree(s)/diploma(s); min. 5 years' EFL experience—preferably including teacher-training and production of ESP materials.

Please write, enclosing cv, to: Rachel Belgrave, Regent School, 148-150 Camden High Street, London NW1 0NG.

ANNOUNCEMENTS

Applications are invited from candidates with the following qualifications: relevant postgraduate degree(s)/diploma(s); min. 5 years' EFL experience—preferably including teacher-training and production of ESP materials.

Please write, enclosing cv, to: Rachel Belgrave, Regent School, 148-150 Camden High Street, London NW1 0NG.

Applications are invited from candidates with the following qualifications: relevant postgraduate degree(s)/diploma(s); min. 5 years' EFL experience—preferably including teacher-training and production of ESP materials.

FIELD STUDIES

Applications are invited from candidates with the following qualifications: relevant postgraduate degree(s)/diploma(s); min. 5 years' EFL experience—preferably including teacher-training and production of ESP materials.

Please write, enclosing cv, to: Rachel Belgrave, Regent School, 148-150 Camden High Street, London NW1 0NG.

INTERNATIONAL LANGUAGE CLUB

Applications are invited from candidates with the following qualifications: relevant postgraduate degree(s)/diploma(s); min. 5 years' EFL experience—preferably including teacher-training and production of ESP materials.

Please write, enclosing cv, to: Rachel Belgrave, Regent School, 148-150 Camden High Street, London NW1 0NG.

EXHIBITIONS

Applications are invited from candidates with the following qualifications: relevant postgraduate degree(s)/diploma(s); min. 5 years' EFL experience—preferably including teacher-training and production of ESP materials.

Please write, enclosing cv, to: Rachel Belgrave, Regent School, 148-150 Camden High Street, London NW1 0NG.

ENTERTAINMENTS

Applications are invited from candidates with the following qualifications: relevant postgraduate degree(s)/diploma(s); min. 5 years' EFL experience—preferably including teacher-training and production of ESP materials.

Please write, enclosing cv, to: Rachel Belgrave, Regent School, 148-150 Camden High Street, London NW1 0NG.

FOR SALE AND WANTED

Applications are invited from candidates with the following qualifications: relevant postgraduate degree(s)/diploma(s); min. 5 years' EFL experience—preferably including teacher-training and production of ESP materials.

Please write, enclosing cv, to: Rachel Belgrave, Regent School, 148-150 Camden High Street, London NW1 0NG.

PERSONAL

Applications are invited from candidates with the following qualifications: relevant postgraduate degree(s)/diploma(s); min. 5 years' EFL experience—preferably including teacher-training and production of ESP materials.

Please write, enclosing cv, to: Rachel Belgrave, Regent School, 148-150 Camden High Street, London NW1 0NG.

ANNOUNCEMENTS

Applications are invited from candidates with the following qualifications: relevant postgraduate degree(s)/diploma(s); min. 5 years' EFL experience—preferably including teacher-training and production of ESP materials.

Please write, enclosing cv, to: Rachel Belgrave, Regent School, 148-150 Camden High Street, London NW1 0NG.

Applications are invited from candidates with the following qualifications: relevant postgraduate degree(s)/diploma(s); min. 5 years' EFL experience—preferably including teacher-training and production of ESP materials.

Dodson Bull Carpets-Furniture-Fabrics 15% to 33 1/2% DISCOUNT

Choose with confidence Dodson Bull Carpets-Furniture-Fabrics

ABROEN 11 Exchange St. A81 2NH. Tel: 84088/8

Dodson Bull Ltd. 100 Whitehall Street, London EC2A 2NE

OXFORDSHIRE Oxford 20 miles. London 75 miles. A CHARMING COTSWOLD STONE HOUSE

Knight Frank & Rutley 20 Hanover Square London W1R 0AH

Vertical text on the left margin, possibly a page number or reference.

